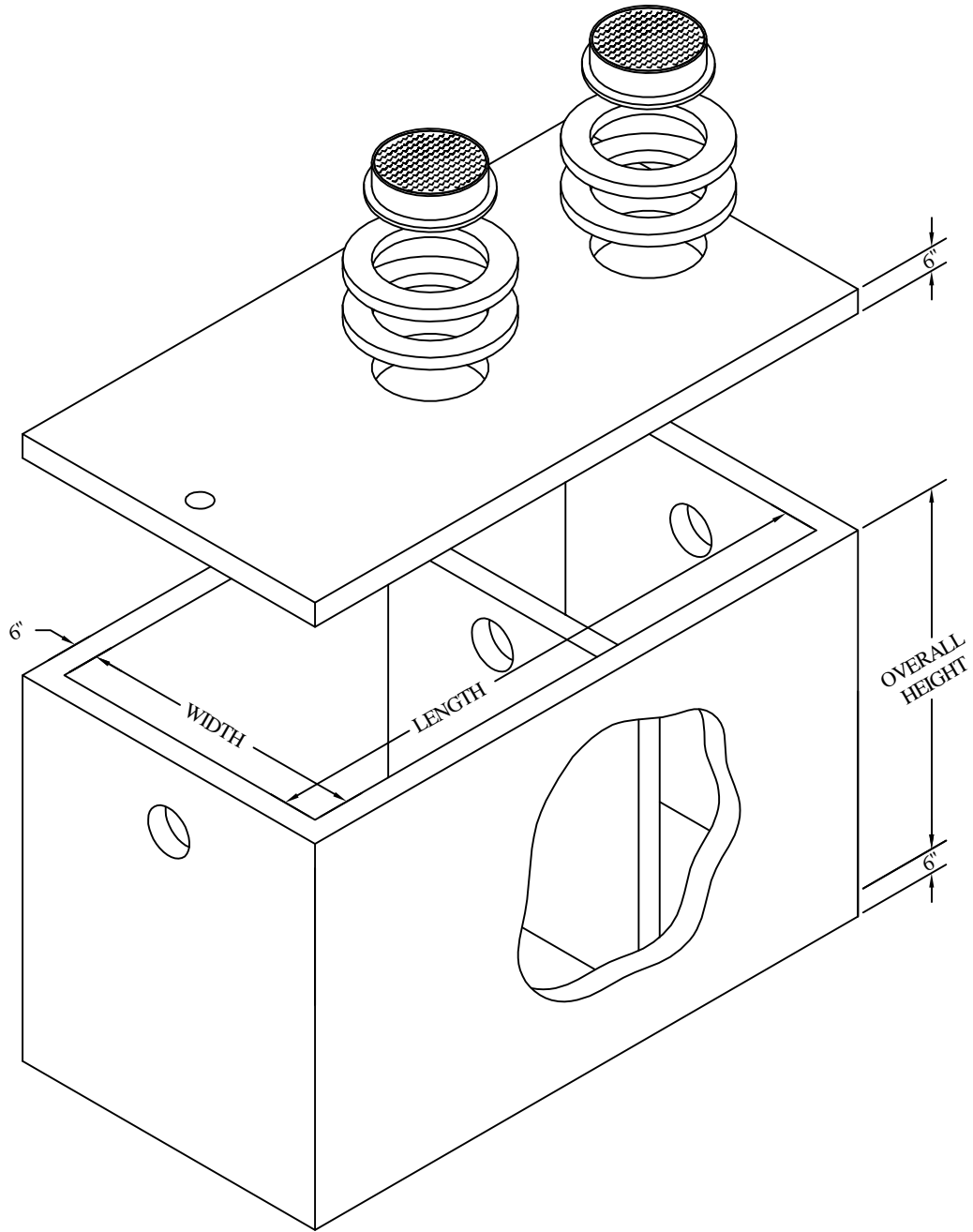


GREASE TRAP

STANDARD MANHOLE



CAPACITY (GALLONS)	WIDTH	LENGTH	OVERALL HEIGHT
500	4'-0"	6'-0"	5'-6"
800	4'-0"	6'-0"	7'-6"
1000	6'-0"	6'-0"	6'-6"
1500	6'-0"	8'-0"	7'-0"
2500	6'-0"	12'-0"	7'-6"

AC MILLER
CONCRETE PRODUCTS, INC.
 WWW.AC MILLER.COM



31 E. BRIDGE ST.
 SPRING CITY
 PA. 19475

PHONE:
 (610) 948-4600
 FAX:
 (610) 948-9750

RT. 22 WEST
 BLAIRSVILLE,
 PA. 15717

PHONE:
 (724) 459-5950
 FAX:
 (724) 459-9151

Precast Concrete Grease Trap
 with Solid Walls and Baffle Wall

Hatch, Rectangular Access or Frame & Cover, Circular Access

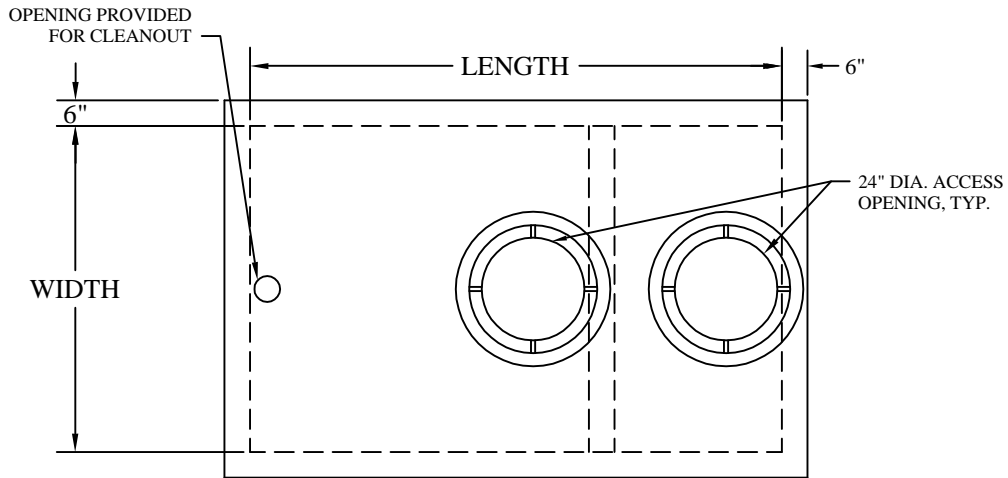
FILE NAME: GREASE TRAP P1

DATE: 8/20/03

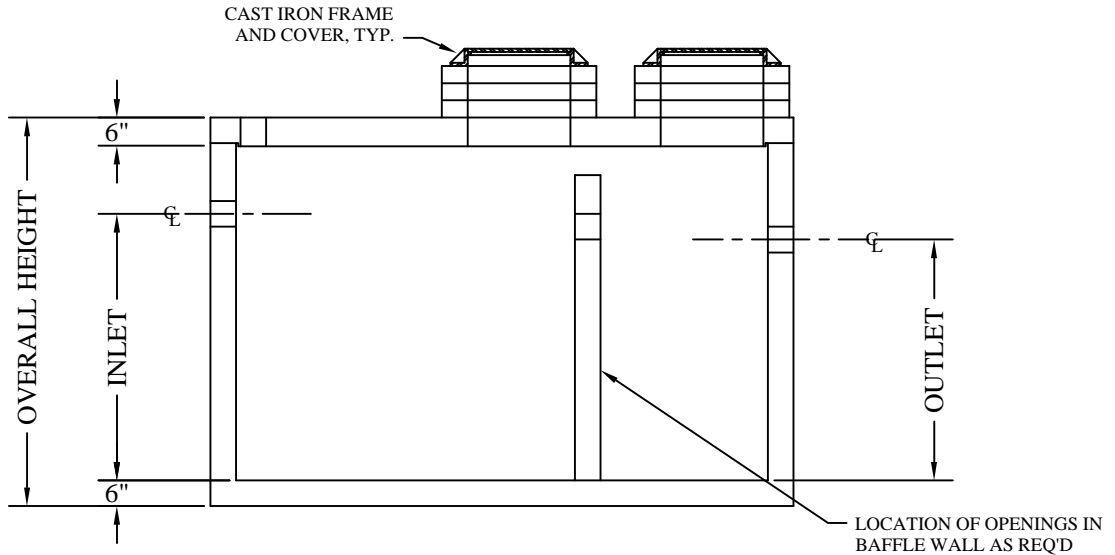
DRAWN BY: BTH

GREASE TRAP

STANDARD MANHOLE



PLAN VIEW



SECTION VIEW

* PLEASE NOTE:
ACM USES INSIDE DIMENSIONS TO
DESCRIBE VAULT SIZE.

* FOR ANY ADDITIONAL
INFORMATION PLEASE CONTACT
A.C. MILLER SALES
REPRESENTATIVE

JOB: _____
CUSTOMER: _____
DRAWING ___ OF ___

CAPACITY (GALLONS)	WIDTH	LENGTH	OVERALL HEIGHT
500	4'-0"	6'-0"	5'-6"
800	4'-0"	6'-0"	7'-6"
1000	6'-0"	6'-0"	6'-6"
1500	6'-0"	8'-0"	7'-0"
2500	6'-0"	12'-0"	7'-6"

LIVE LOAD: HS-20
EARTH COVER: 0 to 2 ft.
CONCRETE: 5000 psi AT 28 DAYS
REBAR: GRADE 60, ASTM A615 SPEC'S
PRECAST CONCRETE VAULT CONFORMS TO ASTM
C890 AND C913 SPECIFICATIONS

AC MILLER
CONCRETE PRODUCTS, INC.
WWW.AC MILLER.COM

31 E. BRIDGE ST.
SPRING CITY
PA. 19475

PHONE:
(610) 948-4600
FAX:
(610) 948-9750

RT.22 WEST
BLAIRSVILLE,
PA. 15717

PHONE:
(724) 459-5950
FAX:
(724) 459-9151

**Precast Concrete Grease Trap
with Solid Walls and Baffle Wall**
Hatch, Rectangular Access or Frame & Cover, Circular Access

FILE NAME: GREASE TRAP P2

DATE: 8/20/03

DRAWN BY: BTH