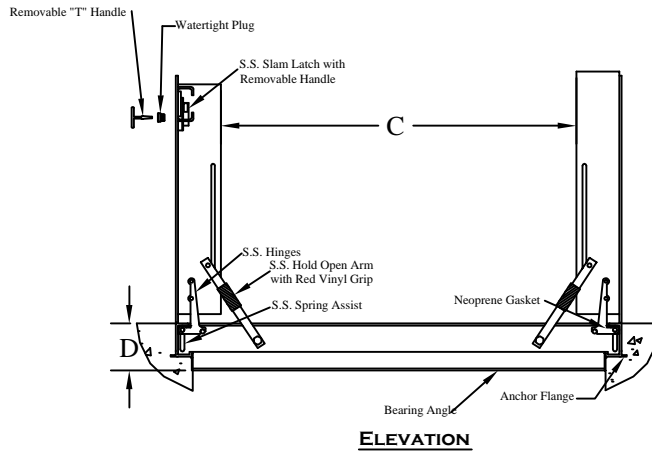
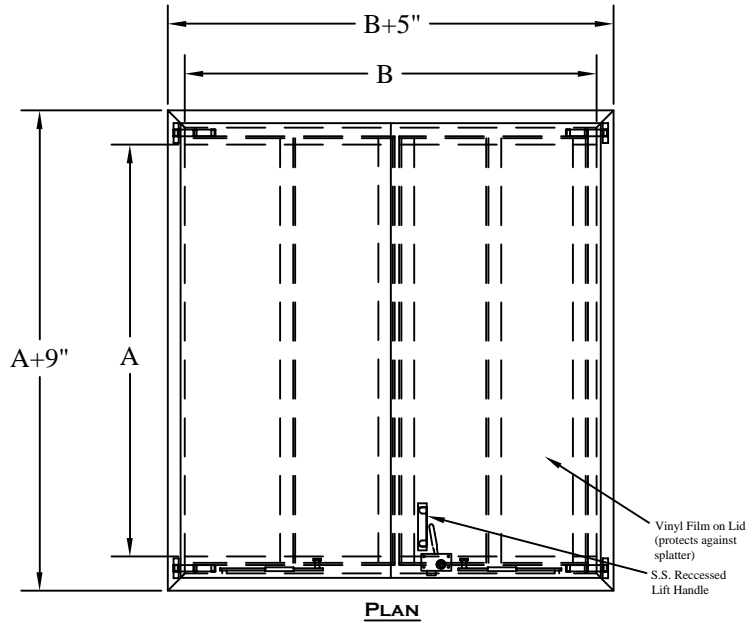


# ALUM DOOR

STANDARD MANHOLE



Please circle desired model and options.

Model	APH2448D	APH3048D	APH3060D	APH3648D	APH3660D	APH3672D	APH4848D	APH4872D	APH6060D	APH6072D	APH___D
"A"	24"	30"	30"	36"	36"	36"	48"	48"	60"	60"	___"
"B"	48"	48"	60"	48"	60"	72"	48"	72"	60"	72"	___"
"C"	43"	41"	51"	39"	51"	63"	35"	59"	45"	57"	___"
"D"	5.5"	6.5"	6.5"	6.5"	6.5"	6.5"	8.5"	8.5"	9.5"	9.5"	___"
Weight	100 lbs.	130 lbs.	165 lbs.	180 lbs.	210 lbs.	240 lbs.	250 lbs.	325 lbs.	340 lbs.	385 lbs.	n/a

**SPECIFICATIONS:**

Access door shall be a non-watertight door as manufactured by Pennsylvania Insert Corp., Spring City, PA. Door lid shall be fabricated with 1/4" aluminum diamond plate designed to support AASHTO H20 Loading without impact, with a maximum deflection of 1/150th of span. Frame shall be extruded aluminum with a 3/16" neoprene gasket and continuous anchor flanges. Door shall open 90 degrees and automatically lock in that position with a stainless steel hold open arm with a red vinyl grip. Door lid shall be equipped with a recessed lift handle. Hinges shall be all stainless steel and attached with stainless steel fasteners. All hardware shall be grade 316 stainless steel. Doors shall have a mill finish with an electrolytic barrier applied to the exterior of the frame to prevent hydrolysis with concrete. Doors shall be equipped with a stainless steel spring assist which shall provide a smooth and controlled operation when opening and closing door. Operation shall not be affected by temperature. Door shall be equipped with a stainless steel slam lock with cover plug and removable handle. Door shall be furnished with a peel-off protective cover to protect finish from concrete splatter. Underside of lid shall have visibility tape applied for safety. Manufacturer shall guarantee material and workmanship for a period of five years.

OPTIONS: Skirting for \_\_\_" slab, insulation, safety chains & posts, s.s. pneumatic gas spring assist.

LOCK OPTIONS: staple for padlock, recessed hasp, keyed deadbolt lock, pentahead lock, heavy duty security lock.

**AC MILLER**  
**CONCRETE PRODUCTS, INC.**  
 WWW.AC MILLER.COM

31 E. BRIDGE ST.  
 SPRING CITY  
 PA. 19475

PHONE:  
 (610) 948-4600  
 FAX:  
 (610) 948-9750

RT.22 WEST  
 BLAIRSVILLE,  
 PA. 15717

PHONE:  
 (724) 459-5950  
 FAX:  
 (724) 459-9151

Precast Concrete  
 Double leaf Aluminum Access Door

FILE NAME: WITH DOOR 1

DATE: 8/20/03

DRAWN BY: BTH